

MAPPING THE SOCIAL AND AFFORDABLE HOUSING NETWORK IN AUSTRALIA

> Dr Judy Kraatz tells us about a new research project being conducted by the Sustainable Built Environment National Research Centre, which promises to shed light on the realities of the Australian social and affordable housing system.

In October 2018, we commenced our Sustainable Built Environment National Research Centre (SBEnc) research project, Mapping the Social and Affordable Housing Network.

“ The research is designed to assist with improving system productivity, effectiveness, efficiency and – consequently – housing outcomes ”

As part of this project, the research aims to provide insights into the Australian social and affordable housing system with a focus on public, community and non-market rental housing. The research is designed to assist with improving system productivity, effectiveness, efficiency and – consequently – housing outcomes.

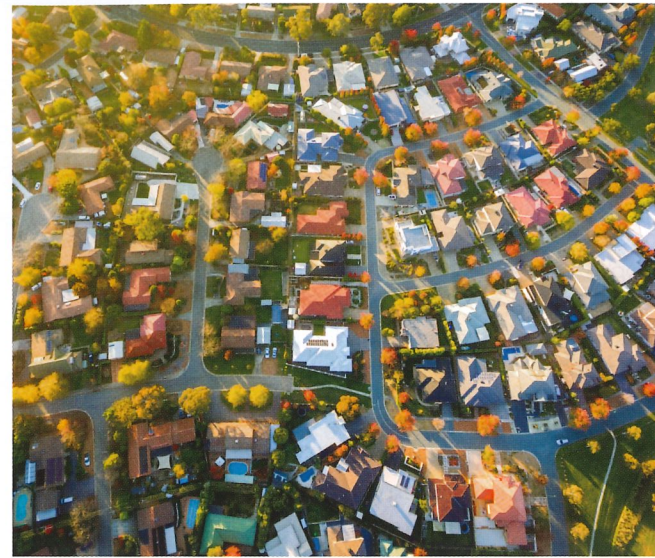
The proposed multi-layered network maps, to be delivered by March 2020, are intended to facilitate a strategic yet pragmatic understanding of the complexities and associations within the system. The maps will highlight:

- Interactions;
- Strengths and weaknesses;
- Areas for improvement; and
- Gaps in knowledge.

All of these criteria will help establish research priorities, skills development needs and innovation opportunities.

The high level maps will identify and describe the various elements of this complex system, integrating asset and service elements (around a person-centred approach) across the nine domains identified in earlier SBEnc research:

- Community;
- Economics;
- Education;
- Employment;
- Environment;
- Health and wellbeing;
- Housing;
- Social engagement; and
- Urban amenity.



The diagram shown overleaf is an initial mind map developed to guide our considerations:

Other important aims for this research include:

- Identifying how the sector is integrated with the broader housing system;
- Rationalising policy and research agendas to help in establishing policy, research and skills development priorities; and
- Highlighting differences across and within partner states (i.e. Western Australia and Queensland) in terms of economic drivers, preconditions for delivery and regional differences.

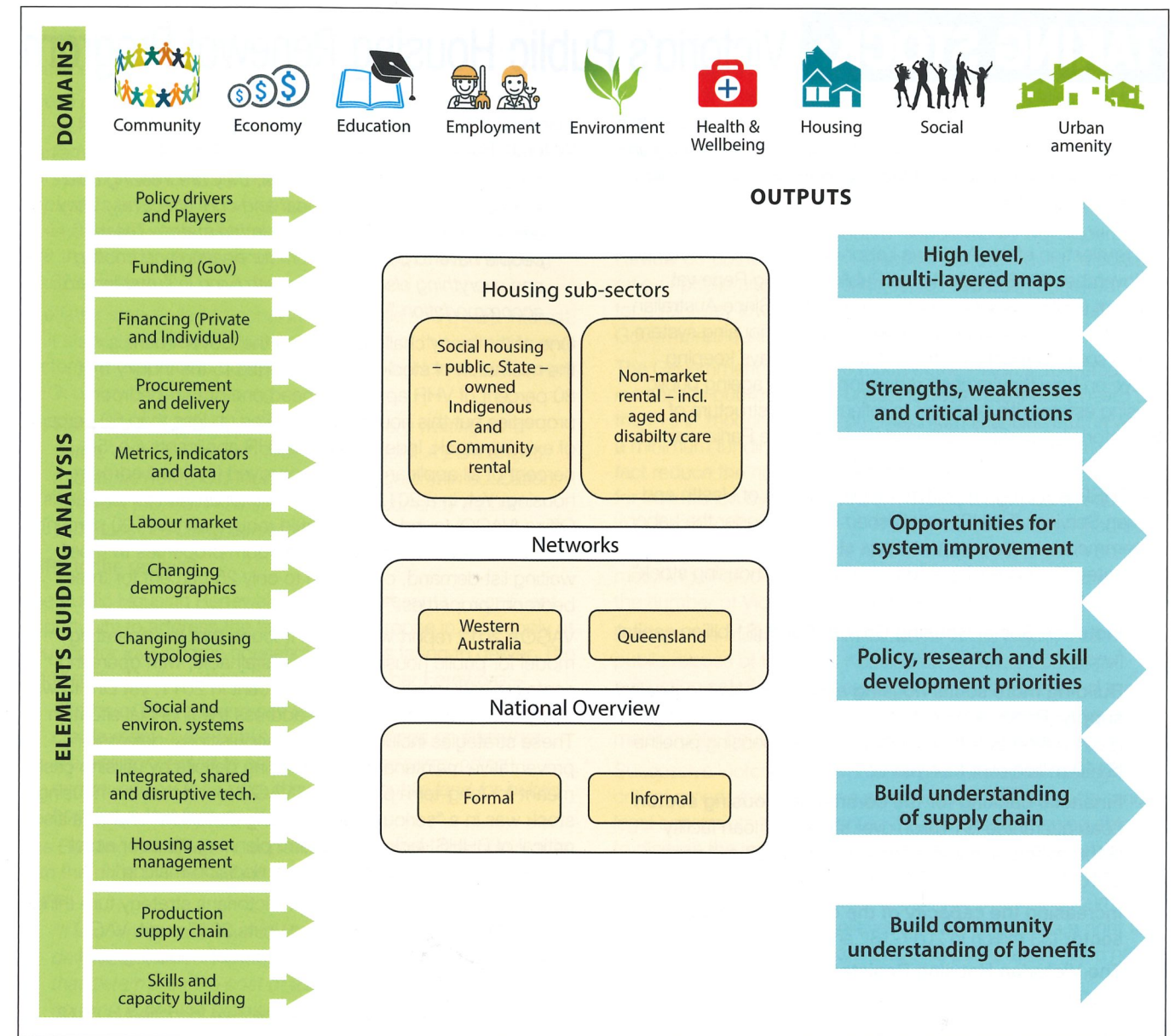
Details across the 13 elements highlighted in the diagram on the next page will be initially compiled from a scan of industry and academic reports and literature. This includes outputs from previous SBEnc social and affordable housing research, underway since 2014 (details available at www.sbenrc.com.au).

“ A key output of this research will be a Practice Guide to inform those working in this sector ”

While the mapping methodology is being developed, a network of stakeholders will also be identified with a particular focus on Western Australia and Queensland. Once draft maps have been established, a series of interviews will be undertaken with these key stakeholders to ensure the rigour of the final maps.

A key output of this research will be a Practice Guide to inform those working in this sector. Depending on project resources, this may ultimately be a virtual document that can be updated by project partners or key stakeholders.

The maps will be high-level but pragmatic to enable stakeholders involved in social and affordable housing policy, programs and delivery to more accurately identify opportunities for improvement, innovation, research and skills development.



- If you wish to contribute to this research, either through participation in interviews or with in-kind or financial support (to enable further dissemination of our final maps), please contact the Project Leader, Judy Kraatz – j.kraatz@griffith.edu.au



Dr Judy Kraatz is a Senior Research Fellow, Cities Research Institute, Griffith University. She is also Project Leader for Mapping the Social and Affordable Housing Network.

Updates on our research findings will be posted on the project website – <http://sbenrc.com.au/research-programs/1-61/>

Acknowledgement: This research has been developed with funding and support provided by Australia's Sustainable Built Environment National Research Centre (SBEnc) and its partners. Core partners in this research include Western Australian Department of Communities, BGC Australia, Queensland Department of Housing and Public Work, and Griffith and Curtin Universities.