



Dr Keith D. Hampson

**CEO, Sustainable Built Environment National Research Centre,  
Curtin University**

*Perth, Australia  
CIB TG85 Coordinator*

Keith has over 30 years of industry, government and research leadership. He has a Bachelor of Engineering with Honours from QUT, an MBA, and a PhD from Stanford University focusing on innovation and business performance. He is a Fellow, Institution of Engineers Australia; Fellow, Australian Institute of Company Directors and Fellow, Australian Institute of Management.

Keith serves as CEO of the Sustainable Built Environment National Research Centre, successor to the Australian CRC for Construction Innovation, for which he led the bid team in 2000 and was CEO for its 9 years of operation.

As a Professor of Construction Management at Curtin University, he continues to work collaboratively with colleagues across Australia and globally to transform industry performance in sustainability, safety and productivity for a stronger and more competitive industry.



John V. McCarthy, AO

**Chair of Governing Board, Sustainable Built Environment  
National Research Centre**

*Sydney, Australia*

John is recognised as one of Australia's industry leaders. He has an intimate working relationship with major banks, superannuation funds, institutional investors, financiers and senior real estate professionals and property analysts, as well as most industry bodies within the property and construction industry.

Roles have included National President of the Property Council of Australia (PCA), Director of the Australian Building Codes Board (ABCB), and Chair of the Australian Construction Industry Forum (ACIF). He served as inaugural president of the Australian Sustainable Built Environment Council (ASBEC) and was Australia's first industry representative on the International Board of the CIB (International Council for Research and Innovation in Building and Construction) since 2004, serving as its global president 2010 to 2013. In 2009 he was awarded the Order of Australia. John works out of Sydney as Chairman of Australian Enterprise Holdings Property Pty Ltd.



Dr Judy A. Kraatz

**Senior Research Fellow, Faculty of Science and Engineering,  
Queensland University of Technology**

*Brisbane, Australia  
CIB TG85 Coordinator*

Judy is currently a Senior Research Fellow working with the **Sustainable Built Environment National Research Centre (SBEsrc)**, to investigate R&D investment and impact in the Australian built environment.

With over twenty-five years of professional activity in the built environment, her career spans from being a design architect; to leading a team of professionals delivering city-wide solutions for public buildings and parklands; to integrating sustainability into regional endeavours, design practice and business process solutions.

In 2009, Judy completed a PhD (Urban Development) at the Queensland University of Technology addressing issues of corporate responsibility in the delivery major economic infrastructure projects. Prior to this, Judy was Group Manager of the Architecture Group with Brisbane City Council (2001-05) leading a team of up to 40 design professionals delivering urban and social infrastructure across the city. This followed three years as the Program Director for building courses (building design, survey, construction and project management) being delivered across Australia and SE Asia through the Central Queensland University. A key focus of both these roles was embedding sustainability, in curriculum at CQU, and in business and project delivery at BCC. Prior to that time, Judy progressed through a number of roles in the Commonwealth Government's building procurement groups, as design architect, change agent, and senior manager.



### *Adriana Sanchez, M.Sc*

**Research Associate, Sustainable Built Environment National Research Centre, Curtin University**

*Perth, Australia*

*CIB TG85 Commission Secretary*

Adriana holds an MSc. in Sustainable Resource Management with honours from the Technische Universität München (TUM), majoring in water, soil and renewable resource management. She has been working at the Australian Sustainable Built Environment National Research Centre (SBEnc) since January 2012.

Prior to this role, Adriana carried out research support activities at the Department of Climate Change and Ecology of the TUM and at Smart Utilities Solution; an environmental consulting firm based in Munich, Germany, with international projects covering tailor-suited solutions in waste-to-energy, water management and off-grid green energy technologies for farmers and production plants. Adriana also worked for the German Technical Cooperation (GIZ) in a project partially sponsored by Deltares in the development and implementation of a computerised interactive flood model for a local watershed in the Philippines.



### *Dr Aminah Robinson Fayek*

**University of Alberta, Faculty of Engineering, Department of Civil and Environmental Engineering**

*Edmonton, Canada*

*CIB TG85 Coordinator*

Aminah is an internationally recognized expert in the development and application of fuzzy logic and fuzzy hybrid modelling techniques for intelligent decision support for the construction industry. She is a Professor in the Hole School of Construction Engineering in the Department of Civil and Environmental Engineering at the University of Alberta, and holds the Ledcor Professorship in Construction Engineering.

Aminah holds the NSERC Senior Industrial Research Chair (IRC) in Strategic Construction Modeling and Delivery. She was also the Associate Industrial Research Chairholder (IRC) in Construction Engineering and Management from 2006-11, and has a long record of successful university-industry collaborations in construction management research.



*Dr Mercia Maria Semensato de Barros*

**Assistant Professor, University of Sao Paulo - Escola Politécnica**  
*Sao Paulo, Brazil*

Mercia is an Assistant Professor at Department of Construction Engineering of Escola Politécnica of University of Sao Paulo where she teaches and conducts researches focused on innovation and rationalization in construction processes and production management. Mercia also operates in the area of rehabilitation of buildings with a focus on the technologies and costs.

She also has worked as a researcher at the Foundation for Technological Development Engineering (FDTE) and as a consultant ad hoc advisory Foundation for Research Support of the State of Sao Paulo (FAPESP) and the Financier of Studies and Projects (FINEP).



*Dr Francisco Ferreira Cardoso*

**Professor, University of Sao Paulo - Escola Politécnica**  
*Sao Paulo, Brazil*

Francisco is a Professor at Escola Politécnica, the Engineering School of University of Sao Paulo, teaching Construction Technology and Management. He is also vice president of the Undergraduate Committee of Escola Politécnica, director of the National Association for the Built Environment Technology (ANTAC) and adviser to the Brazilian Council for Sustainable Construction (CBCS).

Francisco operates in the Brazilian Program of Quality and Productivity in Habitat (PBQP-H) with the Ministry of Cities, and is also a member of the National Committee for Technological Development of Housing – CTECH, as well as researcher for the Foundation for the Technological Development of Engineering (FDTE). Francisco has experience in Civil Engineering (Construction), with an emphasis on competitiveness, quality and production modernization, production management in construction, and innovation and rationalization in construction processes.



*Dr Lúcia Helena de Oliveira*

**Associate Professor, University of Sao Paulo - Escola Politécnica**  
*São Paulo, Brazil*

Lúcia Helena is an Associated Professor at Department of Construction Engineering of Escola Politécnica of University of Sao Paulo where she teaches and conducts researches on building services.

She is a member of the Commission-W062 Water Supply and Drainage for Buildings of CIB - International Council for Research and Innovation in Building and Construction, member of the Brazilian Council for Sustainable Construction – CBCS, where she acts as one of the coordinators of the thematic group "Water".



*Dr Jeff H. Rankin*

**Professor and Research Chair in Construction Engineering and Management, *University of New Brunswick***

*Fredericton, Canada*

Jeff holds the rank of Professor and is the M. Patrick Gillin Chair in Construction Engineering and Management. Previous to joining the Department of Civil Engineering, Jeff was the Executive Director of the Construction Technology Centre Atlantic, an innovation broker for the region's construction industry.

Jeff began in the construction industry as a labourer and his experience has included various project and construction management roles. He has been involved in many types of construction projects including commercial high-rises and larger projects such as the Confederation Bridge (a 13 km bridge linking two Canadian Provinces). While completing his doctorate at the University of British Columbia, Jeff's research centred on the development of integrated and distributed construction management systems based on information standards (a precursor to Building Information Modelling). Currently, Jeff's research program focuses on improving the performance of the construction industry by strengthening its capacity for innovation, with a specific interest in the appropriate adoption and implementation of information and communication technologies.



*Dr Saiedeh Razavi*

**Assistant Professor and Chair in Heavy Construction, *McMaster University***

*Ottawa, Canada*

Saiedeh is the Inaugural Chair in Heavy Construction, and Assistant Professor at the Department of Civil Engineering at McMaster University. She earned her PhD in Civil Engineering at the University of Waterloo and joined McMaster from Concordia University where she was working as a postdoctoral fellow on Automation in Construction.

Through academic and industry involvement, Saiedeh has gained fourteen years of experience in collaborating and leading multidisciplinary team-based projects in sensing, automation, information technology, intelligent systems, and their applications in Construction, Transportation, Infrastructure Management, and Logistics. Saiedeh holds academic appointments in the Department of Civil Engineering and at the McMaster-Mohawk Bachelor of Technology-Civil Engineering Technology Program. She is also an associate member of the McMaster's School of Geography and Earth Sciences and an associate editor of the ASCE Journal of Computing in Civil Engineering. She teaches courses in project management, engineering economics, construction management, and optimizations for civil engineering systems.



*Dr Russell J. Thomas*

**Director Fire Research (retired), *National Research Council of Canada***

*Ottawa, Canada*

Russ has recently retired from his post as Director, Fire Research, in the Construction Portfolio of the National Research Council of Canada.

Prior to becoming the Director of Fire Research some fifteen years ago, Russ was responsible for

leading the team developing the framework for Canada's new Objective-Based Building and Fire Codes. He came to NRC in the late 1980's from an academic post at the University of Warwick in the UK to set up the Advanced Construction Technology Laboratory where research was undertaken into applying advanced computational techniques and human computer interaction techniques to the construction sector. In addition to running the Fire Research Program, Russ was also responsible for NRC-IRC's Center for Computer-assisted Construction Technologies, based in London Ontario where research was undertaken into the development of advanced computational tools for the construction industry.



*Dr. Kim Haugbølle*

**Senior Researcher, Danish Building Research Institute (SBI)**

*Hørsholm, Denmark*

Kim is an experienced researcher on innovation and technology assessment in the construction industry with special emphasis on procurement, building performance, life cycle economics and environmentally sound design.

Trained in both engineering and political studies, he has acquired extensive experience in inter-disciplinary work with respect for both personal and professional diversity.

Throughout his career, he has worked in inter-disciplinary work environments of engineers, architects, economists and sociologists spanning both the technical sciences and the social sciences.

Kim has been involved in the coordination and management of numerous national and international R&D projects, planning of educational activities, running a political secretariat of a think tank, and heading a research department. Currently, he is deeply involved in the planning and execution of the new education as "BSc (Eng) in Process and Innovation" at the Copenhagen University College of Engineering (IHK).

Kim has been or is a member or vice-chairman of several boards and committees. Currently, he is the international coordinator of the CIB Working Commission W118 on Clients and Users in Construction as well as the Nordic researchers network on construction economics and organisation (CREON).



*Dr. Suvi Nenonen*

**Research Manager, School of Engineering, Aalto University**

*Espoo, Finland*

Suvi holds a Research Manager position at Aalto University where she carries out facility service research activities. Her research group focuses on the business relations between companies, work environment management, construction and real estate practices, as well as contract life cycle and environmental management.

The group's research activities are characterized by interdisciplinary, close cooperation with business, domestically and internationally networked operations, as well as work-based dissertation research. She has also been coordinating the Built Environment Programme at the Finnish Funding Agency for Technology and Innovation (TEKES) since 2009.



### *Dr Miimu Airaksinen*

**Research Professor, VTT Technical Research Centre of Finland**  
*Espoo, Finland*

Miimu completed her PhD in engineering at Helsinki University of Technology in 2003 on buildings moisture and mould problems. Her current research focuses on eco-efficiency in built environment through projects such as IBEN (energy efficient, intelligent built environment).

She was recently involved in the development of a strategic research agenda for RYM SHOK (strategic research centre for built environment in Finland). Previous to her current role, Miimu was involved with several building and city level projects in energy and eco-efficiency. She is currently member of steering committee in E2BA, European Construction Technology Platform, Energy Efficient Buildings Association. In addition, she is an active in the EERA, European Energy Research Alliance Smart City steering group.



### *Terttu Vainio, Lic. Tech.*

**Senior Research Scientist, VTT Technical Research Centre of Finland**  
*Espoo, Finland*

Terttu started her career at VTT before graduating and has carried out applied research ever since. She has a Master of Science (Technology) and Licentiate of Science (Technology) – pre-doctoral postgraduate degree from Tampere University of Technology.

She is an expert in construction economics, particularly in construction as a part of the national economy, input-output analysis, and money flow analysis. Terttu recently was involved in efforts to investigate energy renovation of building stock and energy renovation as business opportunity.



### *Dr Frédéric Bougrain*

**Researcher, CSTB, University Paris-Est, Centre Scientifique et Technique du Bâtiment (CSTB)**  
*Champs-sur-Marne, France*

Frédéric works as a researcher for the Economics and Human Sciences Department at CSTB (a state-owned industrial and commercial research centre under the wings of the Ministry of Housing) in France. His research is concentrated on society issues with a particular focus on innovations in the building and construction industry and energy saving performance contracts.

He previously lectured at the University of Orléans (France) where he defended a thesis on innovation, small and medium-sized enterprises and the consequences for regional technology policy. Frédéric has published papers on public private partnerships, energy saving performance contracts, innovation in small and medium sized enterprises and the social housing sector.



## Dr Alexandra Staub

**Associate Professor of Architecture, The Pennsylvania State University**

*Pennsylvania, USA*

Alexandra holds a B.A. from Columbia University in New York, a professional degree in architecture from the University of the Arts Berlin, and a Ph.D. in architecture from the Brandenburg Technical University Cottbus, Germany.

In addition to practicing architecture, she has spent twenty years in research and education at university level, both in Germany and the United States. In addition to training students in the research and design process, including questions of technology and sustainability, her research centres around architectural and urban production as a cultural product, examining technical and spatial development in the context of social demands and development. She has published widely in this area, and serves on the editorial board of *Enquiry: The ARCC Journal of Architectural Research* and the bilingual theory-based journal *Wolkenkuckersheim/Cloud-Cuckoo-Land*.



## Arun Kashikar

**Head of R&D, TATA Housing and Development Co.**

*Mumbai, India*

Arun has extensive experience in civil and structural designs and engineering coordination of projects in various sectors such as oil and gas; chemical and petrochemical; nuclear; industrial; and real estate. He also has experience in managing innovations within the private industry.

Arun specialises in design management, seismic analysis and design, finite element analysis, analysis and design of RCC and steel structures, value engineering and innovation, quality and safety management systems. As head of the R&D of TATA Housing and Development, Arun is responsible for managing innovations for the organization with the objective of reducing construction time and cost, improving quality and safety and sustainability.



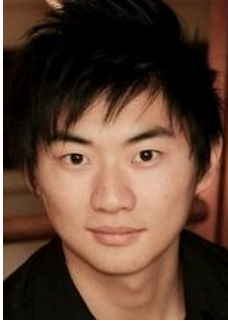
## Dr Suzanne Wilkinson

**Associate Professor, Department of Civil and Environmental Engineering, University of Auckland**

*Auckland, New Zealand*

Suzanne is an Associate Professor in Construction Management at the University of Auckland. Her research interests focus on disaster recovery and reconstruction, construction contract administration and relationship management for construction projects.

Suzanne completed Bachelors in Civil Engineering (Honours) and a PhD in Construction Management from Oxford Brookes University, UK. Her recent research book, co-authored with Rosemary Scofield, "Management for the New Zealand Construction Industry" published by Prentice Hall, has been adopted as a standard text at New Zealand Universities and used by construction companies in New Zealand. She lectures undergraduates and post-graduate students in project management, construction management, and construction law and administration. Suzanne also acts as an advisor to Government and construction companies on aspects of construction productivity and disaster recovery.



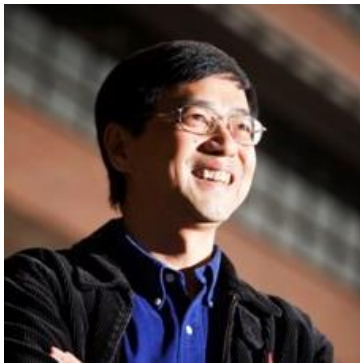
*Charles Ma*

**Research Student, Department of Civil and Environmental Engineering,  
University of Auckland**

*Auckland, New Zealand*

Charles completed his Civil Engineering degree in 2012 at The University of Auckland. As part of his degree, he completed a research project on innovation in construction focusing on how to improve innovation within construction organisations.

Charles research interests include strategy, innovation and business management. Charles is currently completing his Bachelors of Commerce.



*Dr Geoffrey Q. Shen*

**Chair Professor, Head of Department of Building and Real Estate  
and Associate Dean, The Hong Kong Polytechnic University**

*Hong Kong, People's Republic of China*

Geoffrey has a proven track record in academic and research leadership in collaborative working in construction, supported by information and communication technologies. He has led a large number of research projects with total funding over HK\$20 million including five RGC-CERG grants in a row since 2002/03.

Geoffrey has authored over 300 publications including more than 160 papers in academic and professional journals and over 30 scholarly books and research monographs. He has been invited to give keynote presentations in a number of international conferences, has chaired and co-chaired a number of major international conferences, and has served the scientific committee of many international conferences. He teaches extensively in these fields at both postgraduate and degree levels, and has successfully supervised a large number of PhD and MPhil students.



*Dr Shengwei Wang*

**Chair Professor of Building Services Engineering, The Hong Kong  
Polytechnic University**

*Hong Kong, People's Republic of China*

Shengwei joined the Department of Building Services Engineering in 1993 as Assistant Professor and was named Chair in 2009. He is in charge of the teaching Intelligent Building, Building Automation and Control, and Energy Efficiency.

Shengwei is extensively involved in the research and application on building energy management, HVAC system fault diagnosis and optimal control, intelligent building technology and building system dynamic simulation. He has published two books, co-authored other four and published over 180 papers in refereed journals and over 70 papers in international conferences. He is an associate editor "HVAC&R Research", the academic journal of ASHRAE (American Society of Heating, Refrigerating and Air-Conditioning Engineers), and a member of the Engineering Panel of Hong Kong Research Grant Council (RGC). He holds the guest/adjunct/visiting professorship of Xi'an Jiaotong University, Shanghai Jiaotong University, Hunan University, Huazhong University of science and Technology, South China University of Technology, and University of Maryland.





*Jingke Hong, MSc*

**PhD Research Student, Department of Building and Real Estate, The Hong Kong Polytechnic University,**  
*Hong Kong, People's Republic of China*

Jingke obtained his Bachelor in Engineering degree on Project Management from Chongqing University in 2010, and was recommended to Harbin Institute of Technology for postgraduate studies based on his excellent academic performance.

He obtained the MSc degree in 2012. His research field is green building, mainly focusing on evaluating whole life cycle sustainability performance of building.



*Dr Anna Kadefors*

**Associate Professor, Technology Management and Economics, Chalmers University of Technology**  
*Gothenburg, Sweden*

Anna carries out research in the areas of communication, decision-making and learning across contractual and organizational boundaries. She has also studied the effects of contracts, leadership and new ICT for collaboration in construction projects.

Anna's key areas of research are procurement and innovation in project-based organizations. Anna is a member of the Royal Academy of Engineering Sciences as well as of several research networks in the area of trust, collaboration and procurement.



*Dr Jan Bröchner*

**Professor and Chair of Organization of Construction Division of Service Management, Chalmers University of Technology**  
*Gothenburg, Sweden*

Jan holds the Chair of Organization of Construction at Chalmers University of Technology in Göteborg, Sweden. He is an adjunct member, representing the Swedish universities of technology, of the Research Committee of the Development Fund of the Swedish Construction Industry (SBUF).

Currently, he leads the productivity and innovation effect analysis project within Phase II of the 'Bygginnovationen' Programme, supported by Swedish Governmental Agency for Innovation Systems (VINNOVA) and an industry consortium.



*Dr Geert Dewulf*

**Professor and Research Chair of Planning and Development, University of Twente**  
*Enschede, The Netherlands*

Geert is Professor of Planning and Development and Head of the Department of Construction Management and Engineering at the University of Twente, the Netherlands. He is also vice dean of the Faculty of Engineering.

In 2012-2013 he was the UPS Foundation Visiting Professor at Stanford University. Before he joined Twente University he worked at TNO and Delft University of Technology. He holds a PhD in social science from the University of Utrecht. He was a Visiting Fellow at Harvard University in 1990-1991. Geert has written numerous publications on Public-Private Partnerships, urban planning and infrastructure asset management. His research focuses on public private governance issues, strategic planning, and infrastructure asset management. He was scientific president of PSIBouw, the Rethinking Construction Program of the Netherlands (research fund of EUR34 million) and until 2012 Scientific director of the 3TU (Federation of the Dutch Technical Universities) Center of Expertise on the Built Environment.

*Dr Emilia van Egmond-de Wilde de Ligny*

**Senior Lecturer and Researcher, Faculty of Architecture, Building Engineering & Planning, Eindhoven University of Technology**

*Eindhoven, The Netherlands*

Emilia carries out analyses and project evaluations, innovation management and feasibility studies for: enterprises; branch organisations; and governmental and non-governmental organisations. Her research and teaching activities focus on: international technology and knowledge transfers; innovation management; technology and knowledge management; industrialisation and innovation in the construction industry; sustainable building construction; and tropical building concepts and technologies



*Dr Masi Mohammadi*

**Professor, Faculty of Technique and Life Sciences, HAN University of Applied Sciences**

*Arnhem, The Netherlands*

Masi lectures and researches at HAN University of Applied Sciences (Netherlands) as a Professor of Architecture in Health, and at the Technical University of Eindhoven as an Assistant Professor with her focus being on Smart and Sustainable Living Environments.

She conducts research into the potential and added value of smart innovations in improving the residential comfort, efficiency, and sustainability in the built environment. Her main expertise lies in enabling aging-in-place and the acceptance of *smart-care* innovations through familiarizing end users and professionals with smart technology, domesticating it, as well as applying need-based technology in the pre-existing homes.

As the Scientific Coordinator of the Academic Domotics Centre she has not only initiated, coordinated and performed scientific research but also continues to realize experimental and collaborative research in the field of smart healthy environments, together with industrial partners. This platform endeavours to bring cooperation with other knowledge institutes and fuse different stakeholders together so that knowledge transfer is feasible in this area.



*Dr Marit Støre Valen*

**Associate Professor and Head of Department of Civil and Transport Engineering, Norwegian University of Science and Technology (NTNU)**

*Trondheim, Norway*

Marit has over 10 years of experience of carrying out leading research in the areas of Real Estate Management of public and private building portfolios, project management and culture for innovation and interaction processes in the construction Industry.

As an Associate Professor in Real Estate Management she has over a decade of experience of teaching and developing education programs within Maintenance and Modernization of Buildings and Sustainable FM. Additionally, as a head of the department Marit is responsible for the educational quality of the study programs and developing research strategies within civil and transport engineering. Under her leadership, the department has a broad cooperation and joint cooperation in education and research activities with the construction industry and oil/gas industry.



*Dr Knut Samset*

**Professor, Department of Civil and Transport Engineering, Norwegian University of Science and Technology (NTNU)**

*Trondheim, Norway*

Knut is Professor of Project Management at the Faculty of Engineering Science and Technology, Norwegian University of Science and Technology.

He is the director of the Concept Research Programme on Front-end Management of Large Investment Projects, and founding director and senior partner of Scanteam, an international consultancy based in Oslo.

His academic background is in both engineering and social science and he holds a PhD in risk management. He has extensive experience as advisor to national and international governmental and non-governmental organizations, and has written a number of books on project design, evaluation, and project risk. In his current position, he and his team are doing pioneering research into ways and means to ensure quality at entry of major projects up streams in order to improve return on investments downstream.

*Dr Ole Jonny Klakegg*

**Professor, Department of Civil and Transport Engineering, Norwegian University of Science and Technology (NTNU)**

*Trondheim, Norway*

Through his 23 years of work experience, Ole Jonny (MSc, PhD) has alternated between teaching and research at the university, and working as a consultant in project management, building substantial experience including theoretical and practical perspectives.



Ole Jonny shares his time between his current position as Professor of Project Management and his role as R&D Director of Faveo Project Management, the biggest project management consultancy in Scandinavia. He has been involved in a large number of major projects in Norway in both public and private sectors, including building, civil engineering, transport, health, defence, and organisational development.



*Torill Meistad, MSc*

**PhD Candidate, Department of Civil and Transport Engineering,  
Norwegian University of Science and Technology (NTNU)**

*Trondheim, Norway*

Torill has 20 years of experience from social community research, specializing within industrial development, change and restructuring.

She has a Master degree in Economics from the Norwegian University of Life Science, and has an additional education from University of Oslo and Akershus, master in Learning in Complex Systems. Currently, she works at the Norwegian University of Science and Technology, NTNU in Trondheim. Her current field of study is how the construction industry is improving environmental sustainability. In her research she explores Role model building projects with high energy and environmental ambitions, where she focus on how the participating stakeholders develop, exchange and transfer knowledge throughout the process. Her work is supported by The Research Centre on Zero Emission Buildings (ZEB) at NTNU/SINTEF.



*Dr Anita Moum*

**Professor, Faculty of Architecture and Fine Art, Norwegian  
University of Science and Technology (NTNU)**

*Trondheim, Norway*

Anita is a Professor and Senior Adviser for Research at the Faculty of Architecture and Fine Art at NTNU. She is involved in several strategic initiatives that aim to improve building processes and the performance of the architecture, engineering and contractor industry.

Anita completed both her architect degree and PhD at NTNU, the later focused on the use of BIM in collaborative teams. She has been working as an architect and project manager in large-scale projects in Germany for ten years. Anita was also a research manager at SINTEF Building and Infrastructure 2008-2010, responsible for the development of the building process and architectural research. Her main fields of interests are integrated and collaborative design, delivery processes and project management.



*Dr E. Sarah Slaughter*

**President, Built Environment Coalition**

*Boston, USA*

Sarah is President and founder of the Built Environment Coalition, a research and education non-profit organization focused on sustainability and disaster-resiliency advancements to the built environment. She was most recently the Associate Director for Buildings and Infrastructure in the MIT Energy Initiative, co-founder and head of the Sustainability Initiative in the MIT Sloan School of Management.

Previously, Sarah was founder and CEO of MOCA Systems, Inc., a construction program management company based on the construction micro-simulation software system she developed in her research as a professor in the MIT Department of Civil and Environmental Engineering. Earlier, she

was a professor in the Department of Civil and Environmental Engineering at Lehigh University. Sarah is currently a member of the National Academies DOD Standing Committee on Materials, Manufacturing, and Infrastructure, and is a National Academy Associate. She currently serves on the Board of Directors for Retroficiency, Inc., and the Charles River Watershed Association.



*Dr Robert E. Chapman*

**Chief, Applied Economics Office, Engineering Laboratory, National Institute of Standards and Technology (NIST)**

*Gaithersburg, USA*

Robert joined NIST, formerly the National Bureau of Standards, in 1975. In his current position as Chief of the Office of Applied Economics, he leads a group of economists that evaluate new technologies, processes, government programs, legislation, and codes and standards to determine efficient alternatives and to measure their economic impacts.

Previously, Robert was the Program Manager for the information and outreach branch of the Baldrige National Quality Program, where he provided liaison to a rapidly expanding network of state and local quality award programs. Between 1988 and 1990, Robert conducted a series of studies on how federal, state and local technology-based programs were assisting small and medium-sized businesses; these studies were published as a formal Report to Congress.



*Douglas Thomas*

**Research Economist, Applied Economics Office, Engineering Laboratory, National Institute of Standards and Technology (NIST)**

*Gaithersburg, USA*

Douglas is a Research Economist for the Engineering Laboratory's Applied Economics Office at the National Institute of Standards and Technology. Currently, his activities are focused in two interrelated subjects: manufacturing and construction industry activity and the impact of natural and man-made disasters.

His current research on manufacturing and construction activity includes examining spatial and temporal variations in the quality and quantity of industry activity in relation to the domestic and international economy. It utilizes industry data combined with various methods of analysis, including input-output analysis. Douglas' second key area of research examines the impact of natural and man-made disasters, which includes gathering and analysing data on the occurrence and economic impact of disasters.



*Dr Rachel Parker*

**Assistant Dean and Professor, Business School, Queensland University of Technology**

*Brisbane, Australia*

Rachel's research focuses on comparative business systems and the institutional foundations of innovation and industrial competitiveness.

Her work has contributed to understandings of the way in which Australian and international public policy programs affect firm and industry behaviour and therefore industrial development and transformation. She has published over forty articles and three books and her publications appear in

leading international journals in the field including *Entrepreneurship Theory and Practice*, *Organization Studies*, *Political Studies*, *International Journal of Cultural Policy* and *Work, Employment and Society*. Additionally, Rachel recently worked as a consultant/advisor on knowledge transfer activities for the Department of Innovation, Industry, Science and Research; Queensland Rural Industry Training Council; QMI Solutions and Australian Institute for Commercialisation.



*Göran Roos, MSc, MBA*

**Professor and Senior Advisor, Aalto University**

*Aalto, Finland*

Göran chairs the Advanced Manufacturing Council in Adelaide and is a member of the Prime Ministers Manufacturing Leaders Group; the Economic Development Board; the International Advisory Group (IAG) for DesignGov, the Australian Centre for Excellence in Public Sector Design, and CSIRO's Manufacturing Sector Advisory Council, among other organisations.

Göran is a Stretton Fellow appointed by the City of Playford at University of Adelaide and Professor in Strategic Design in the Faculty of Design, Swinburne University of Technology, Melbourne, Australia. He is also an Adjunct and Visiting Professor at several Australian and British universities. Göran is one of the founders of modern intellectual capital science and a recognised world expert in this field as well as a major contributor to the thinking and practice in the areas of strategy and innovation management as well as industrial and innovation policy.