

The Performance Nexus

A Framework for Improving Energy Efficiency in Existing Commercial Buildings by Considering a Whole-of-Building Approach

Presenters: Charlie Hargroves (Curtin University)
and David Sparks (QUT)

Paper Co-Authors: Adj. Ass. Prof. Charlie Hargroves, Samantha Hall, Dr Cheryl Desha, David Sparks and Prof. Peter Newman

Healthy Buildings 2012, Brisbane , Australia, 10 July 2012



Sustainable
Built Environment
National Research Centre

Innovation Underpinning Australia's Infrastructure and Building Industry

[Home](#)

[About Us](#)

[Research](#)

[Partners](#)

[Publications](#)

[Media](#)

[Links](#)

[Contact Us](#)

Research Program 1: Greening the Built Environment

Research Program 1 will deliver improved environmental performance by the built environment through enhanced ecological efficiencies, including carbon emission reductions and climate change adaptation...

[Read more...](#)

Research Program 2: Developing Innovation and Safety Cultures

Research Program 2 will deliver improved social outcomes for built environment workers and the Australian community through increased uptake of sustainable practices and minimising...

[Read more...](#)

Research Program 3: Driving Productivity Through Procurement

Research Program 3 will deliver economic, environmental and social benefits to the built environment industry through reductions in risks and costs and improved productivity...

[Read more...](#)

Prior Research Program: CRC for Construction Innovation



CRC Construction Innovation
BUILDING OUR FUTURE

SBEnc Core Partners:



Project Partners:





Prof. Peter Newman (Curtin)

**Senior
Project
Members**



Prof. Bill Duncan (QUT)

Project Leaders

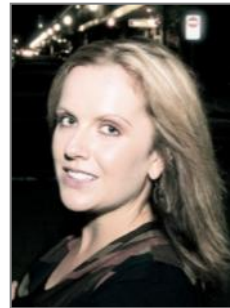


**Charlie Hargroves
(Curtin)**

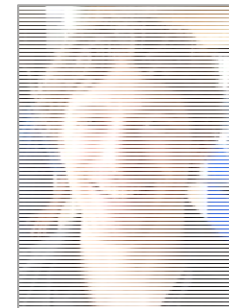


**Dr Cheryl Desha
(QUT)**

Research Team Members



**Samantha Hall
(Curtin)**



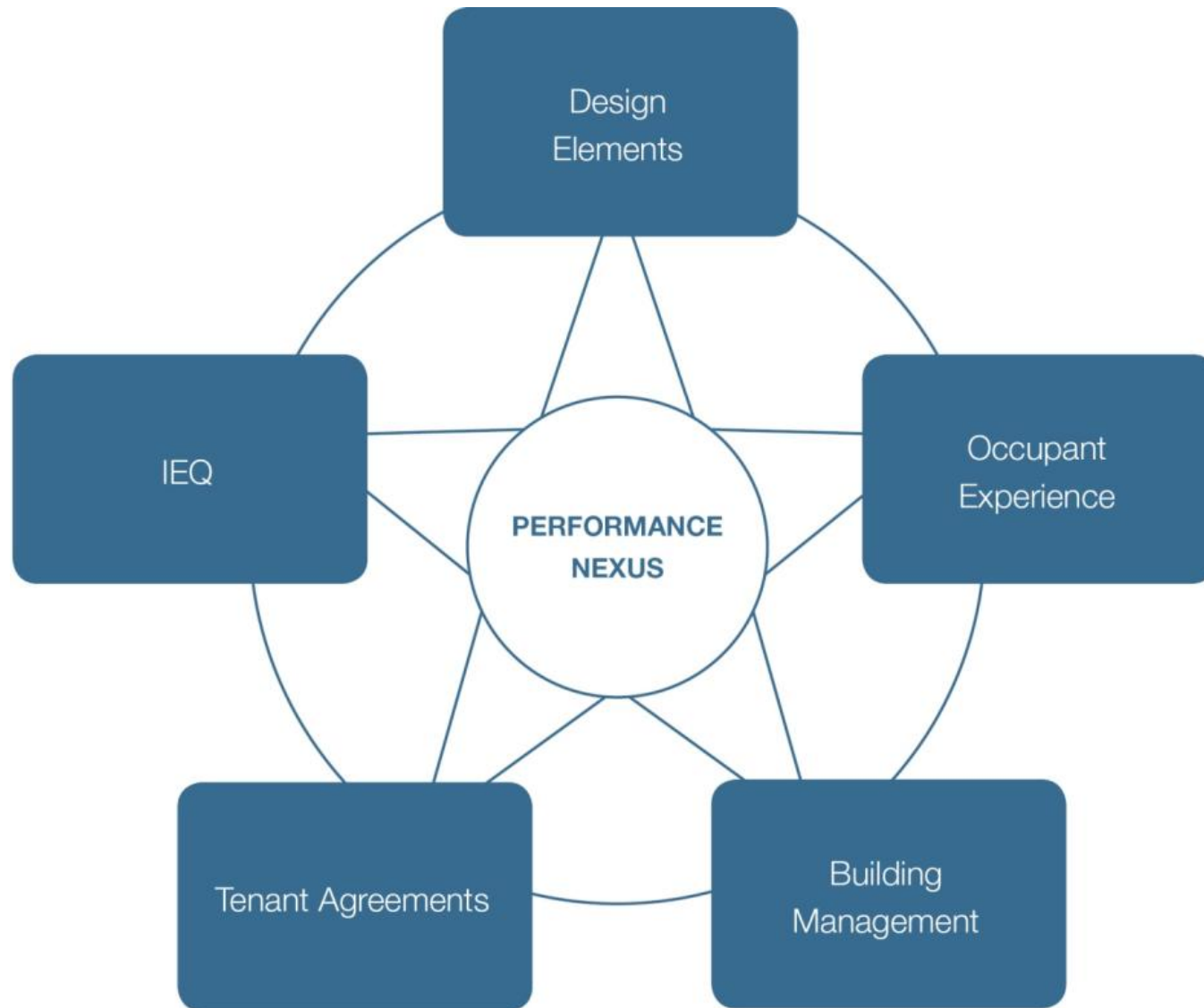
**David Sparks
(QUT)**



**Kuntul Datta
(Curtin)**

Understanding the Performance of Existing Office Buildings to inform Energy Reduction Initiatives

*The focus of this project is to provide a **low complexity guiding framework** to assist efforts to understand a range of factors related to the performance of commercial buildings and **support efforts to undertake upgrades to existing office buildings.***



Understanding the Performance of Existing Office Buildings to inform Energy Reduction Initiatives

Design elements can impact the indoor environment, occupant experience and can dictate what building management and tenant agreement options are available. Design elements include features such as HVAC systems, lighting/ day-lighting methods, building materials and layout.

Understanding the Performance of Existing Office Buildings to inform Energy Reduction Initiatives

Indoor environment quality is influenced by the design elements and can have a significant impact on the health and productivity of building occupants.

Building management practices influence IEQ and tenant agreements can be used to influence IEQ outcomes.

Understanding the Performance of Existing Office Buildings to inform Energy Reduction Initiatives

*The **experience of occupants** related to the building's indoor environment, design elements, and building management practices provides insight into the influence of the office environment on respondents' perceived productivity.*

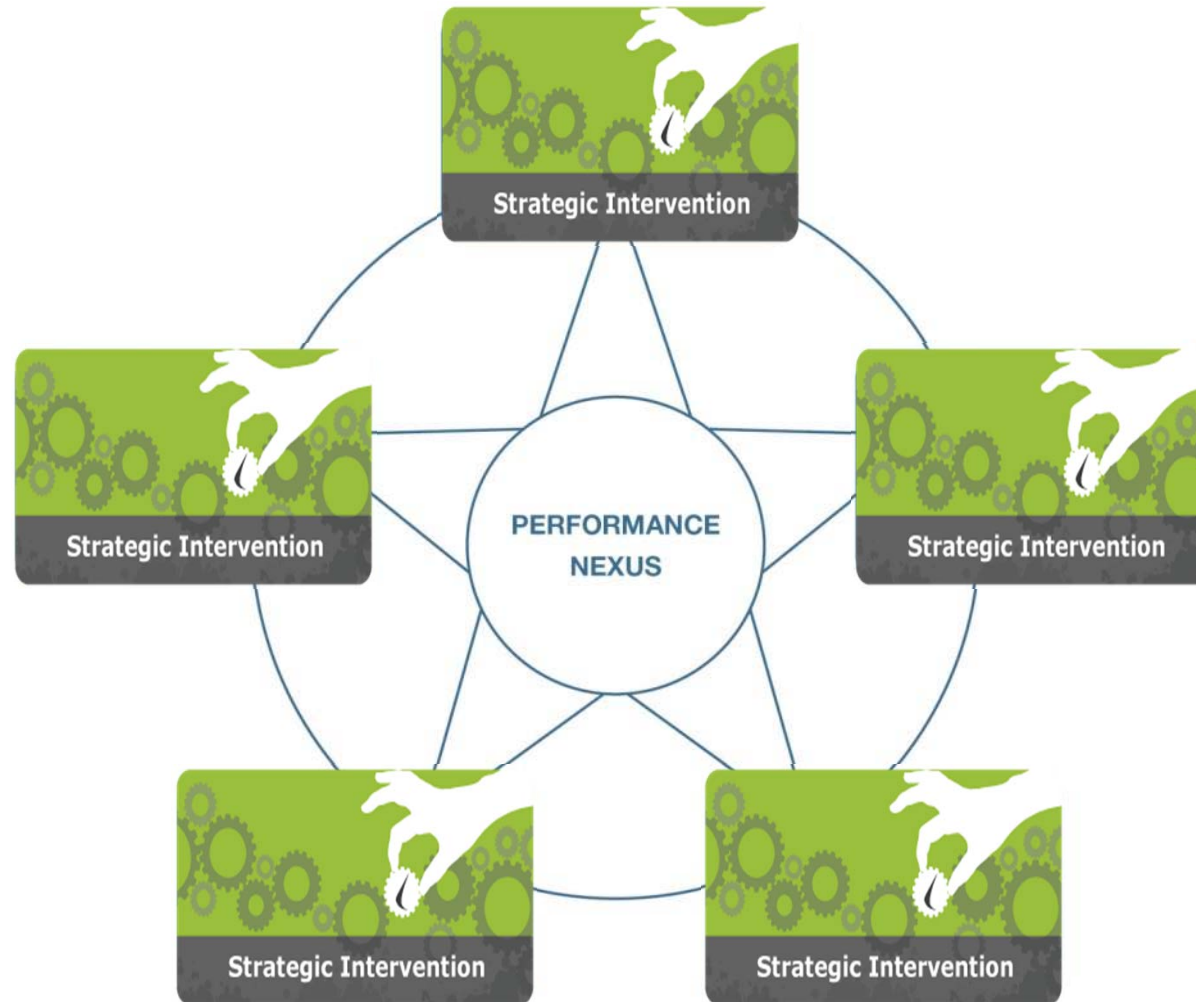
Understanding the Performance of Existing Office Buildings to inform Energy Reduction Initiatives

Building management can have a profound impact on the overall functioning of the building, impacting the indoor environment and occupant experience.

Understanding the Performance of Existing Office Buildings to inform Energy Reduction Initiatives

*A range of existing **legal instruments** that can influence the performance of commercial buildings and underpin greater energy conservation and improved IEQ across the full lifecycle, including design, operation and management, and demolition.*

Next Steps...





Sustainable
Built Environment
National Research Centre



Innovation Underpinning Australia's Infrastructure and Building Industry

[Home](#)

[About Us](#)

[Research](#)

[Partners](#)

[Publications](#)

[Media](#)

[Links](#)

[Contact Us](#)

Research Program 1: Greening the Built Environment

Research Program 1 will deliver improved environmental performance by the built environment through enhanced ecological efficiencies, including carbon emission reductions and climate change adaptation...

[Read more...](#)

Research Program 2: Developing Innovation and Safety Cultures

Research Program 2 will deliver improved social outcomes for built environment workers and the Australian community through increased uptake of sustainable practices and minimising...

[Read more...](#)

Research Program 3: Driving Productivity Through Procurement

Research Program 3 will deliver economic, environmental and social benefits to the built environment industry through reductions in risks and costs and improved productivity...

[Read more...](#)

Prior Research Program: CRC for Construction Innovation



CRC Construction Innovation
BUILDING OUR FUTURE



Sustainable
Built Environment
National Research Centre



Curtin University



Healthy
Buildings 2012

