



Developing a social and affordable housing investment tool

Assoc. Prof. Sacha Reid

Queensland Future Conversations



1.81 Social and affordable housing investment tool

Developing an investment tool via previous research and industry partner engagement

2021 - 2023

1.71 Liveable social & affordable higher density housing

Liveability Framework via case studies and stakeholder interviews

2019 - 2021

1.61 Mapping the social & affordable housing network

Understanding and visualising network complexity

2018 - 2019

1.54 Procuring social & affordable housing

Social procurement criteria through understanding changing demographics and housing typologies

2016 – 2017

1.41 Valuing social housing

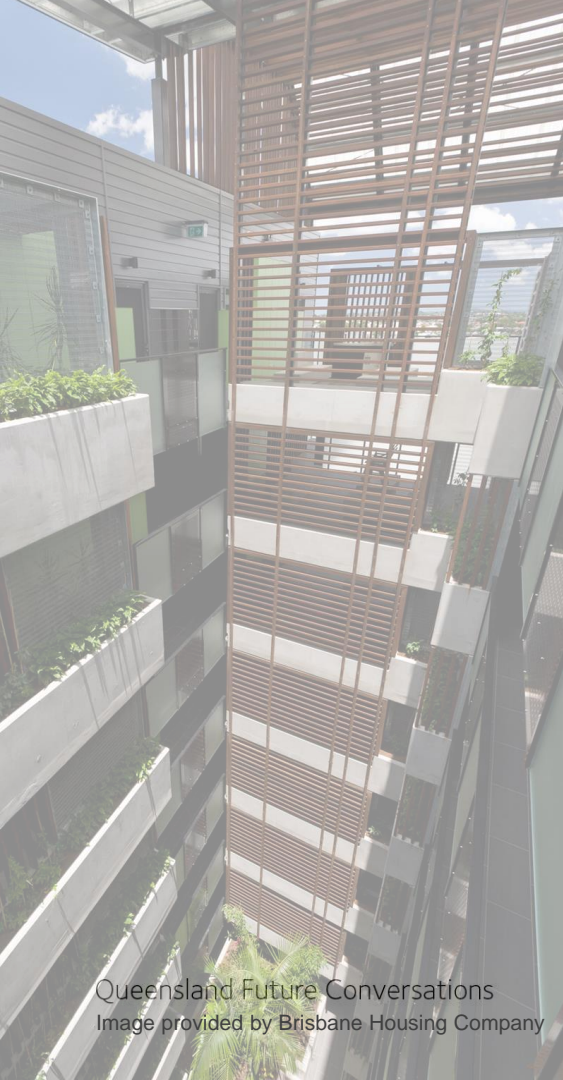
Composite return on investment – individual, organisational, society and equity

2015 - 2016

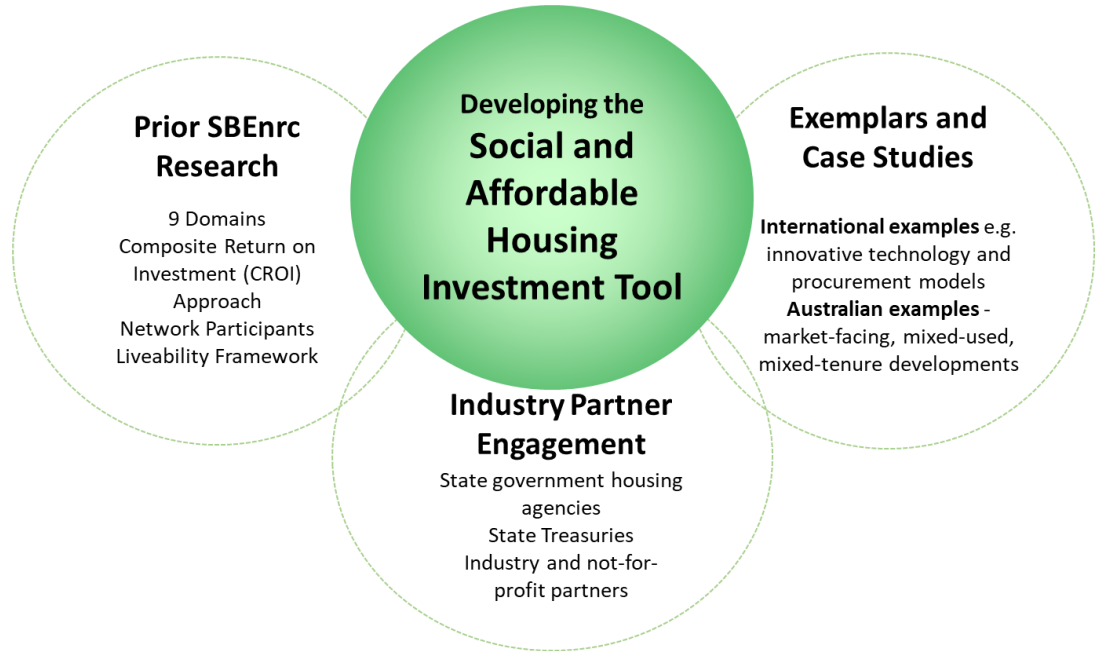
1.31 Rethinking social housing

Productivity-focused conceptual framework including the *9 domains*, and outcomes & Indicators

2014 - 2015



Queensland Future Conversations
Image provided by Brisbane Housing Company



Community and culture



economy



education



employment



environment



health & wellbeing



housing



social engagement



urban amenity

SAHI TOOL INPUTS

Prior SBEnrc research

- Valuing social housing domain tables
- Composite Return on Investment approach including: SROI, wellbeing valuation, transformational narratives and the value of equity
- Typologies and demographics
- Liveability Framework
- Network participants

Case studies

- International – EU, UK, US, Canada
- Australia

Stakeholder engagement

- State government housing agencies
- State Treasury Departments
- Industry, CHPs and NfPs

SOURCE SAHI TOOL

9 domain and 3 context worksheets - detail and graphs

- Community & culture
- Economy
- Education
- Employment
- Environment
- Health & wellbeing
- Housing
- Social engagement
- Urban amenity
- Narratives
- Network engagement
- Innovation opportunities

Select core indicators

Select elective indicators

Program / project specific indicators

Funding social housing scenario clusters

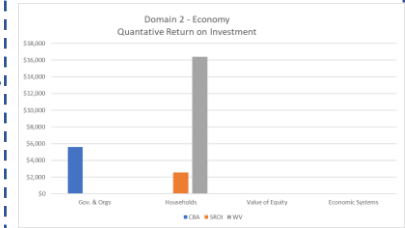
- Built form
- Household
- Connections
- Interactions

Delivering affordable housing scenario clusters

- Typologies
- Demographics
- Engagement
- Supply chain

SAHI TOOL REPORT

- Review outputs to identify gaps or latent opportunities
- Compile report from tables and graphs
- Communicate findings to inform decision making
- Review implementation and outcomes





3 Key Takeaways

- *Move from traditional cost-based approach and a benefits-based approach needed to address housing as essential social infrastructure*
- *Common language across government and business needed to enable effective partnerships to address social, environmental and economic benefits*
- *National housing plan with long term focus key to develop resilient and effective housing system*

Queensland Future Conversations

Image provided by BGC Residential

SBEnc partners and affiliates

BGC Australia - ATCO - Government of Western Australia - Queensland Government -
NSW Community and Justice

Curtin University - Griffith University - RMIT University - Western Sydney University

Brisbane Housing Company Ltd – Foundation Housing - Queenslanders with Disabilities
Network - Rowlinson Architects – Urban Development Institute of Australia WA - Common
Ground Qld - Keystart Home Loans



Sacha Reid

s.reid@griffith.edu.au

Social and Affordable Housing Investment Tool: <https://sbenrc.com.au/research-programs/1-81/>

Liveable social and affordable higher density housing: <https://sbenrc.com.au/research-programs/1-71/>

Mapping the social and affordable housing network: <http://sbenrc.com.au/research-programs/1-61/>

Procuring Social and Affordable Housing: <http://sbenrc.com.au/research-programs/1-54/>

Valuing Social Housing: <https://sbenrc.com.au/research-programs/1-41/>

Rethinking Social Housing: <http://sbenrc.com.au/research-programs/1-31/>

Queensland Future Conversations



Queensland Future Conversations

